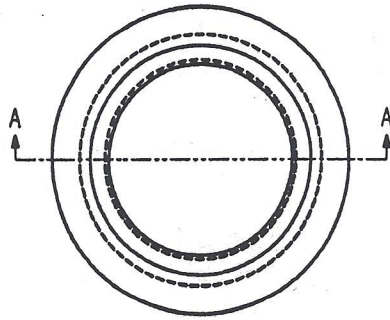
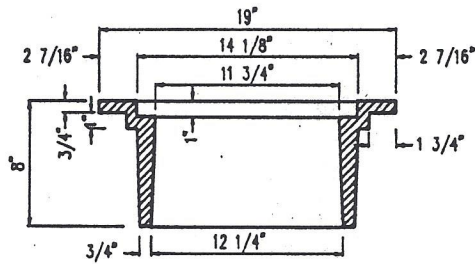


122LBS

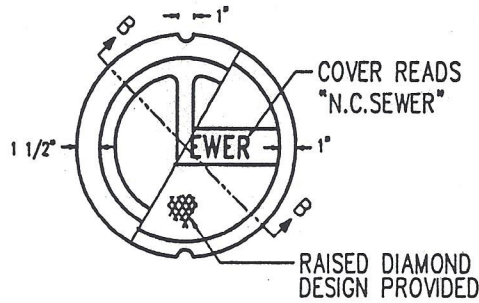


RING PLAN

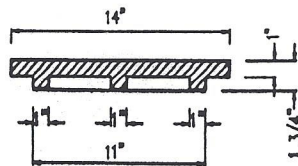


RING SECTION AA

48LBS



COVER PLAN



COVER SECTION BB

JOHN E. POTENTE & SONS INC.

114 WOODBURY ROAD HICKSVILLE, N.Y. 11801
PHONE (516) 935-8585 * FAX (516) 935-8546

NASSAU COUNTY SEWER RING & COVER		DR: J.K. Sigelakis
PAT NOS: L5148-L14C2	A.S.T.M. CLASS 30-GRAY IRON	CK:
SCALE: 1"=1'-0"	DATE: 6 NOV 1980	WT: 170
		NO. 575 1110

JOHN E. POTENTE & SONS, INC.

114 WOODBURY ROAD HICKSVILLE, N.Y. 11801
PHONE (516) 935-8585 FAX (516) 935-8546

ITEM NO: CP ~~368~~

DWG. NO: 000726

CLEANOUT PAD W/ CASTING.

PAT NOS:

MAT. AS NOTED:

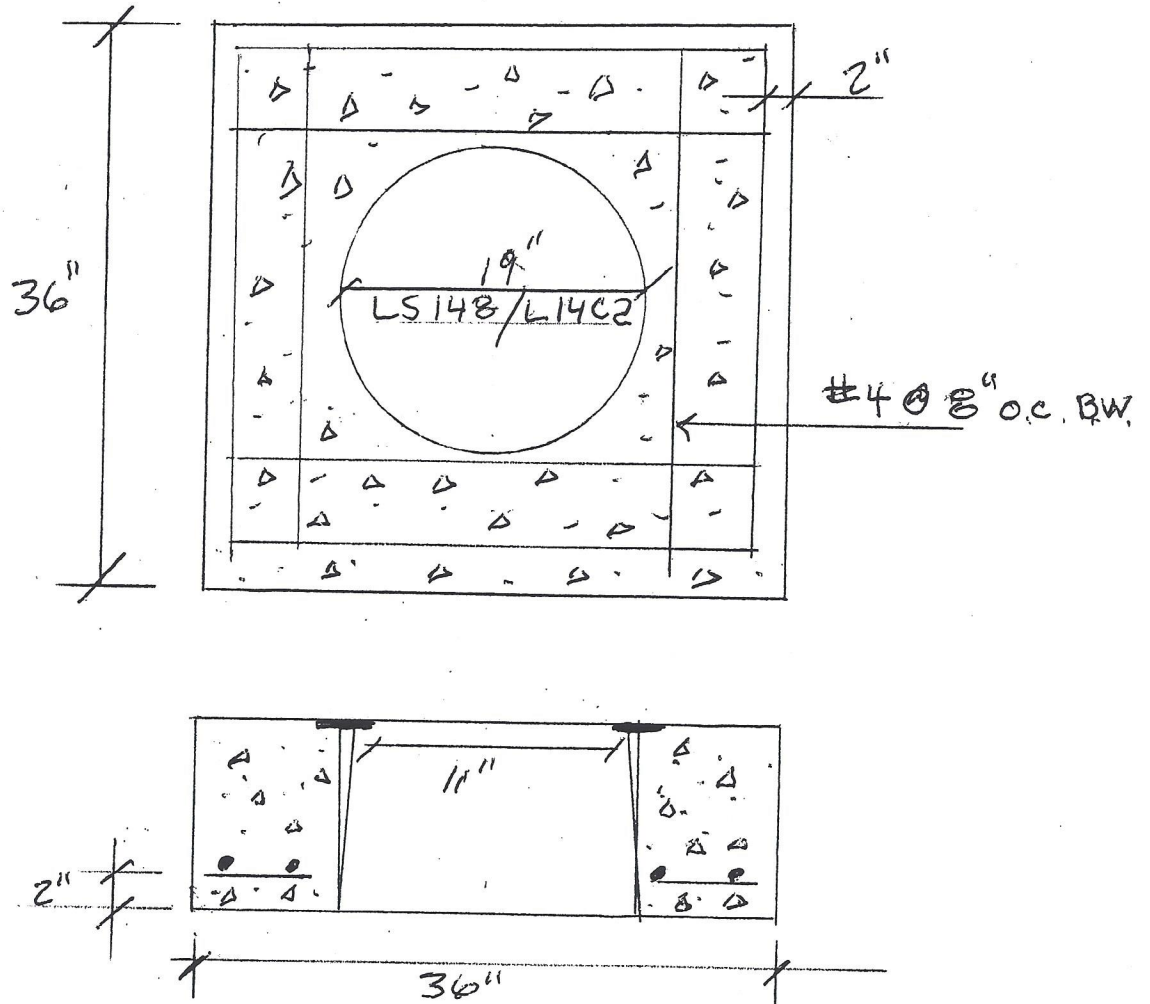
WT.

DR

DR. BY: T.POTENTE

DATE: 03/09/09

CK



Notes: Concrete to attain
3500 psi @ 27 days.