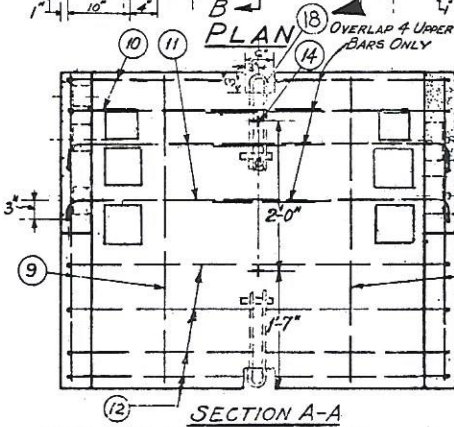
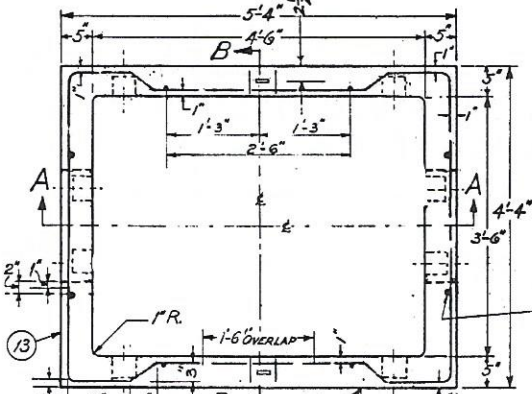
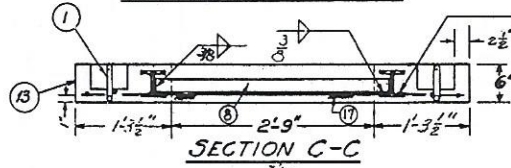
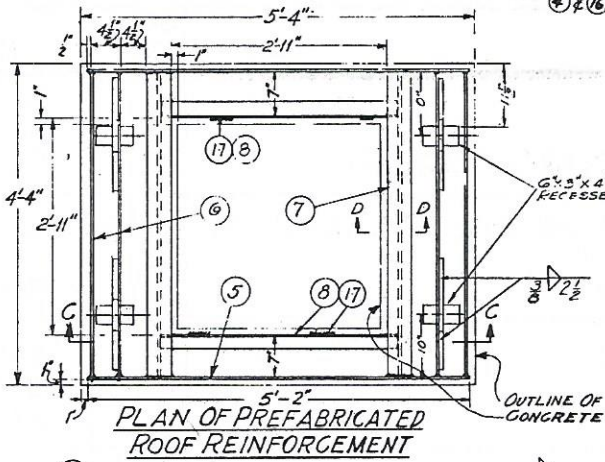
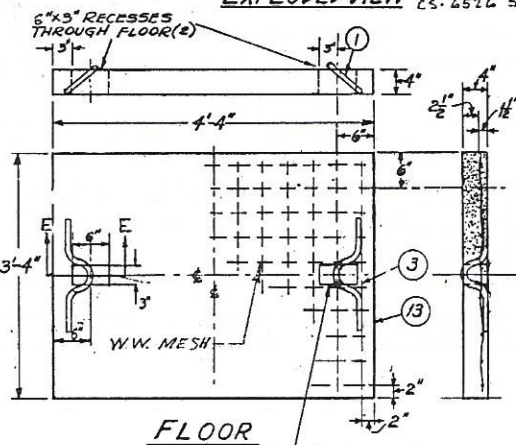
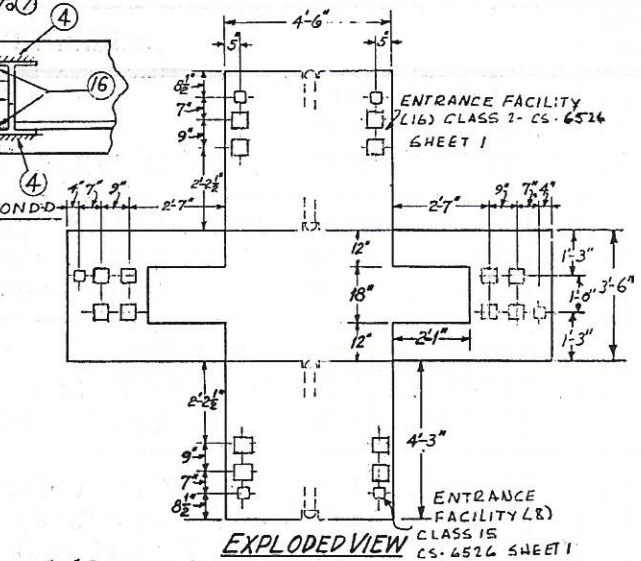
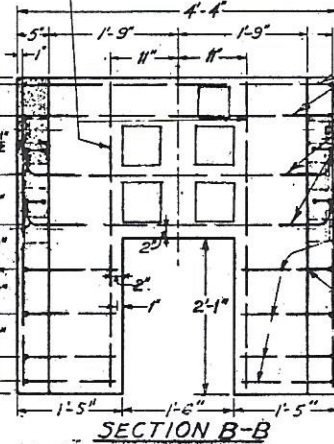


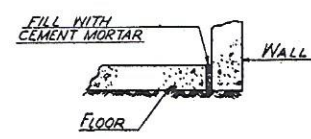
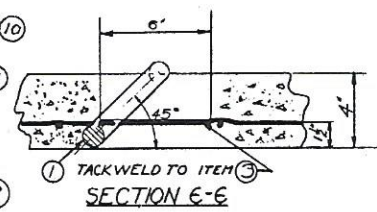
ISSUE CODE
NUMBER
1
2
3
4
5
6
7
8
9
10
11
12
13
14
15
16
17
18
19
20
21



JOHN E. POTENTE & SONS
114 Woodbury Rd.
Hicksville, L. I., N. Y.



AFTER INSTALLATION, HOLES TO BE FILLED WITH CEMENT MORTAR.



CONSTRUCTION SPECIFICATIONS:
WALLS CAN ALSO BE USED INVERTED WITH SLOPE OPENING UPWARD.
WELD BARS AT CROSSING POINTS. USE 3/8" FILLET WELD, 3/8" MINIMUM LENGTH.
ALL BARS TO BE WELDED TO STRUCTURAL MEMBERS WITH 3/8" FILLET WELD, 1/2" MIN. LENGTH.
IN ROCK EXCAVATION INSTALL BOX ON 3" SAND CUSHION

MATERIAL SPECIFICATIONS
ALL REINFORCING BARS SHALL BE BILLET STEEL, INTERMEDIATE GRADE, DEFORMED, AND SHALL CONFORM TO A.S.T.M. DESIGNATION A-15.
ALL STRUCTURAL STEEL SHALL CONFORM TO A.S.T.M. DESIGNATION A-36

WEIGHT IN POUNDS
CONCRETE 5,832
REINF. BARS 104
OTHER 1.9
TOTAL 6,114

REFERENCES

- CS-6502 : CAST IRON COVER
- CS-6512 : CAST IRON FRAME
- CS-6526 : RECESSES, KNOCKOUTS, & LIFTING HOLES
- CS-6570 : LIFTING & PULLING EYES
- PT-14-05-009

SEE REVERSE SIDE FOR BILL OF MATERIAL

Denotes Revision

DRAWN BY	REVISION
APPROVED	1.12/1/60: CHANGE RECESSES
DATE	2.11/16/67-ADD: ITEM 18, REFERENCE.
LONG ISLAND LIGHTING COMPANY	

MANHOLES AND BOXES
TYPE TS-SL DISTRIBUTION BOX
4'-6" X 3'-6" X 4'-0" DEEP
PRECAST CONCRETE

CS		
NO	SHEET	REV
6528	1 OF 1	2